



Fall 2018

AT-10 WICHITA

Cadet Air Corps Museum AT-10 Wichita Restoration

by Chuck Cravens



AIRCORPS AVIATION



AT-10 Image from the Bill and Mary Graham collection.



Update

Work continues on the forward cockpit section. The floor wood has been cut and fitted, much of the skin has been cut and drilled, and the rudder pedals have been assembled.

In October, we had visitors with a family connection to the Beech factory.

Cockpit Section Structure



Guy works on the forward section piping support.



This structure is the instrument panel glare shield.



The battery box is mounted on the right side in this image. The long tubes support it.



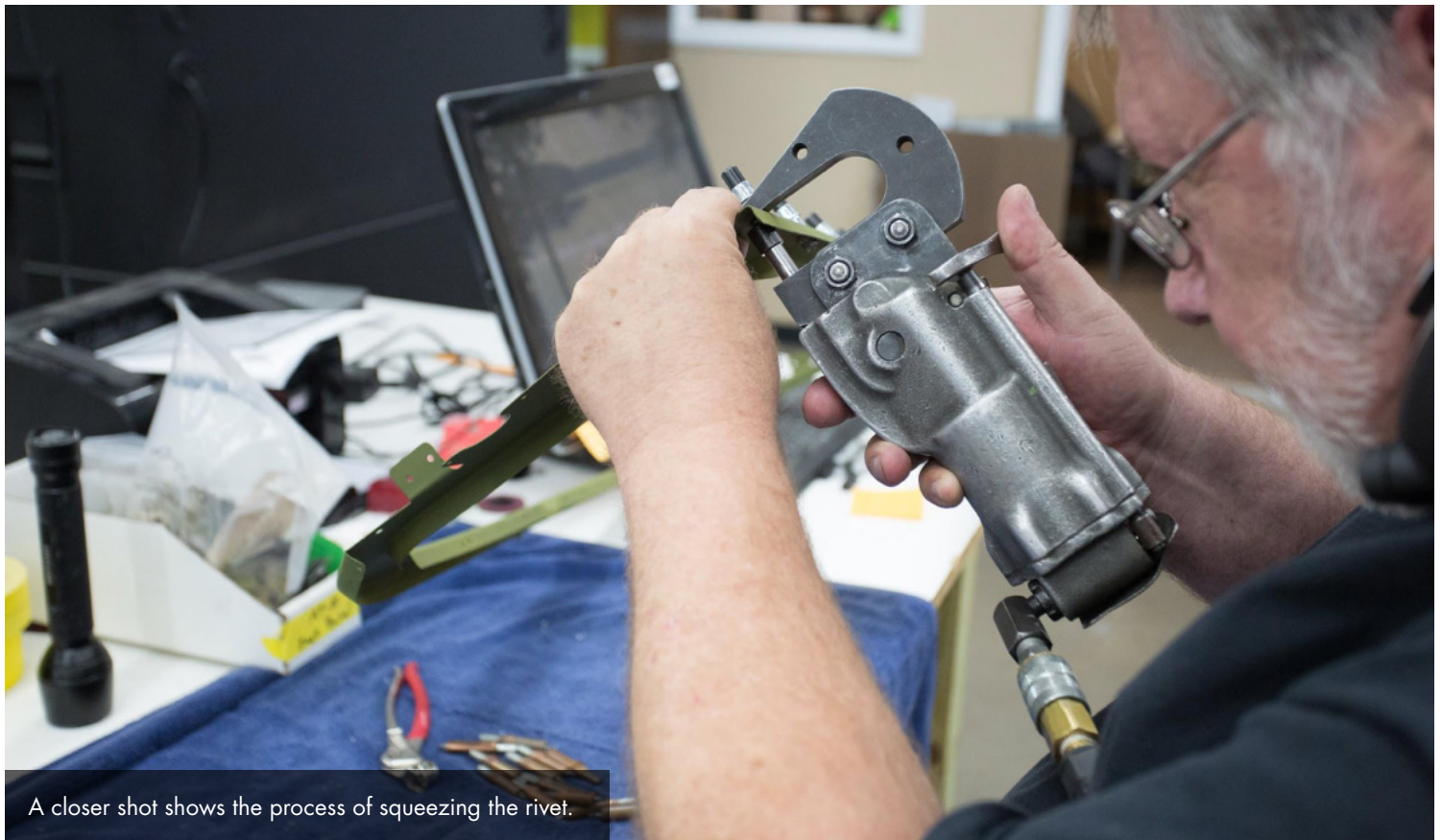
A side skin section is clecoed on.



This is a rudder pedal support bracket.



Guy squeezes a rivet on the instrument panel frame.



A closer shot shows the process of squeezing the rivet.



Clecoes position the windscreen frame on the fuselage.





Fitting the skin sections is a long process.

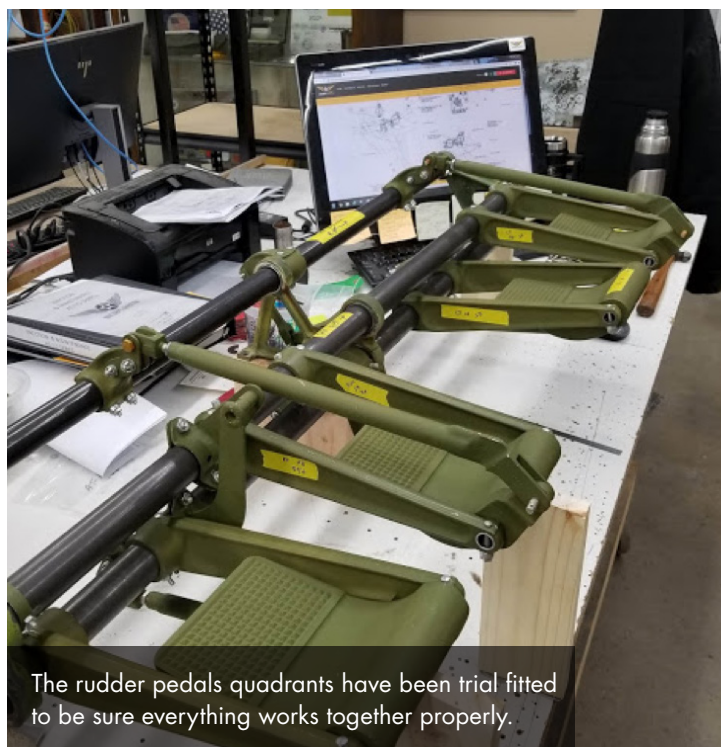


Here Guy works a skin section into conformance with the shape of a frame support.



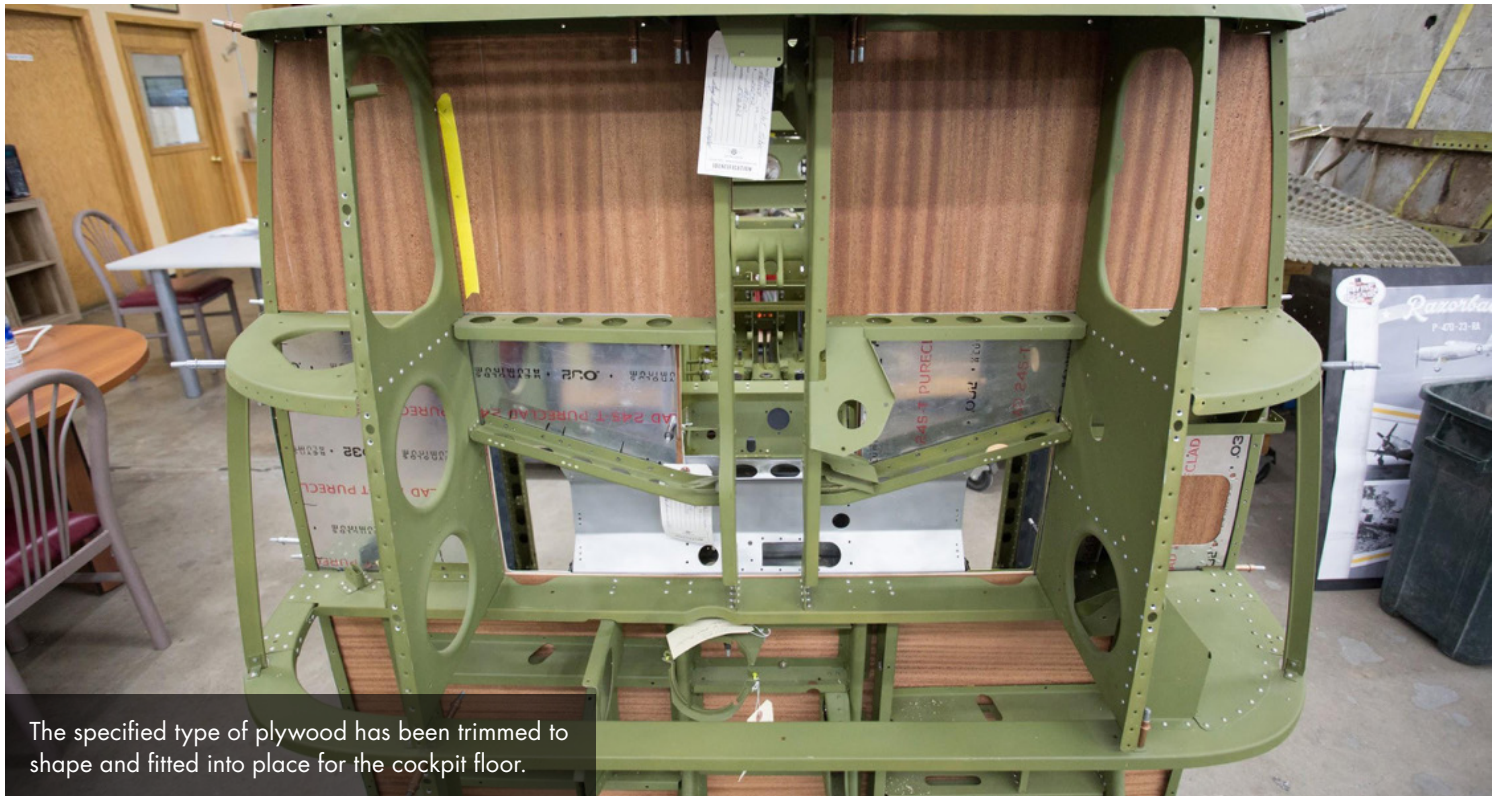


Rudder Pedals

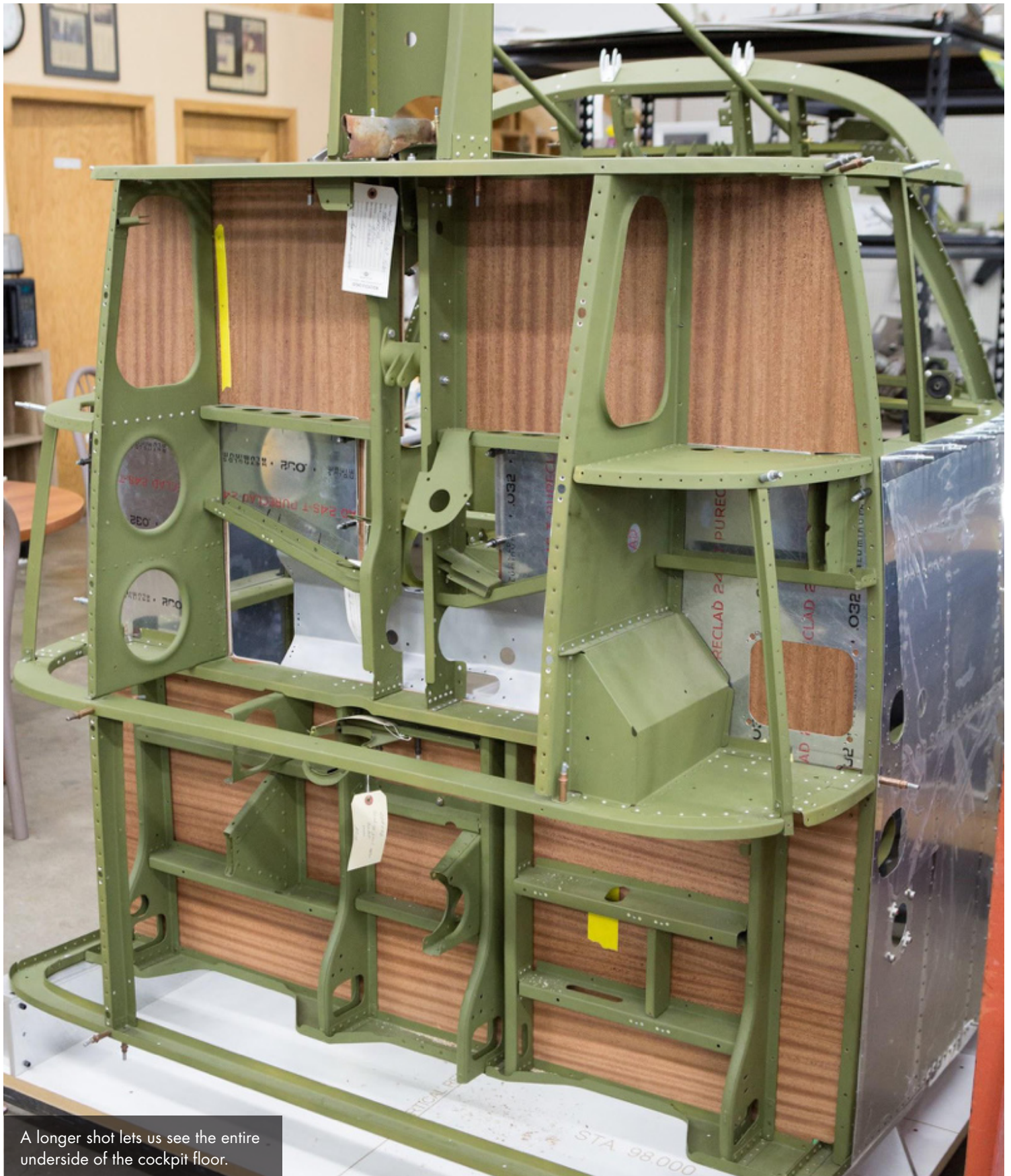




Cockpit Floor







A longer shot lets us see the entire underside of the cockpit floor.



Cockpit Floor



The nose section is also taking shape.



Many clecoes hold the skin sections to the restored frame structure.



Visit by Beechcraft factory worker's son: Bill and Mary Graham

We were privileged to have Bill Graham and his wife Mary visit the shop in October 2018.



Bill and Mary Graham in the AirCorps Aviation restoration shop.

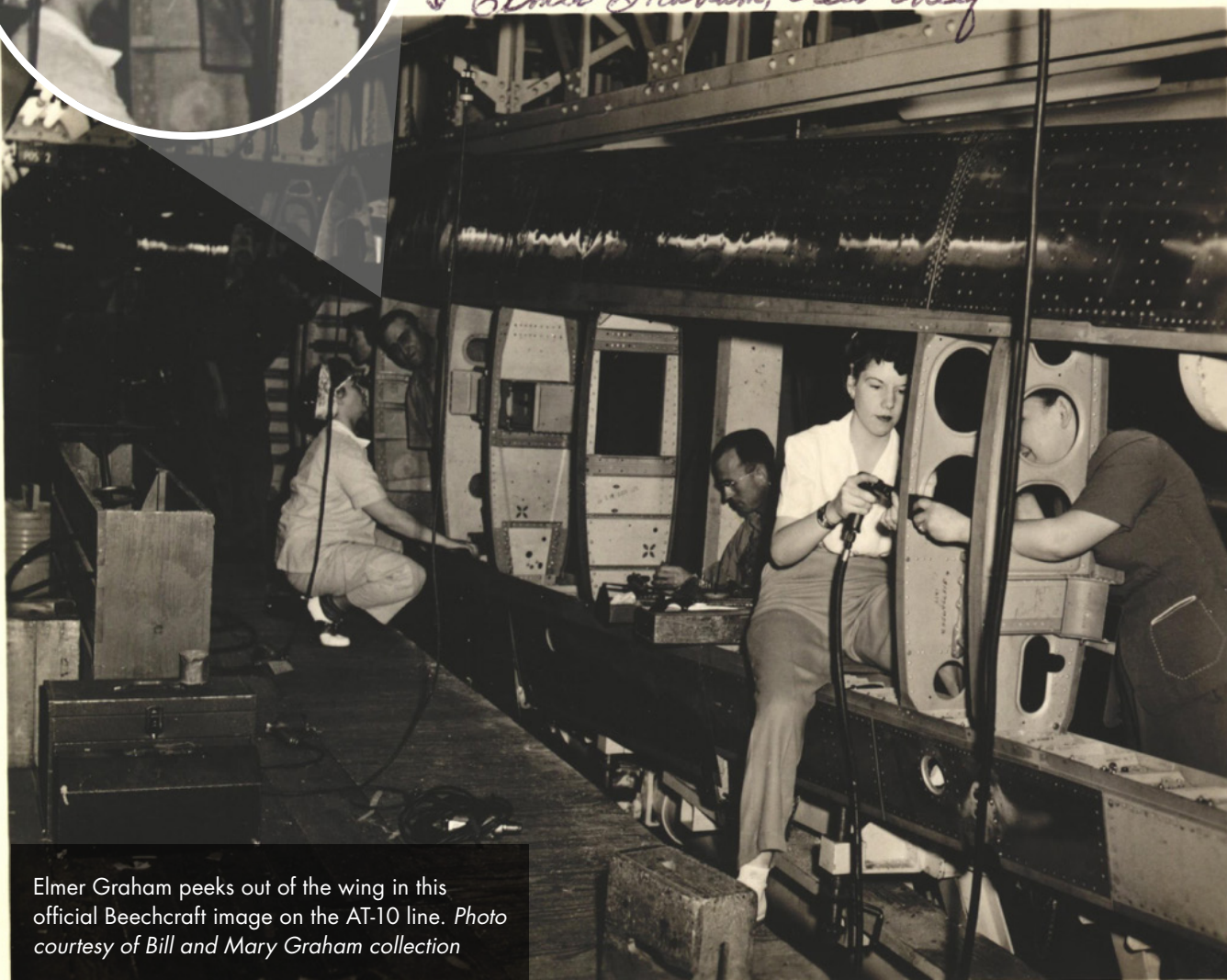
Bill is the son of Beechcraft line worker, Elmer Graham. Lois Graham, Bill's mother, also worked at Beechcraft in the accounting department.

They brought some unique and priceless family heirlooms connected to Beech, including several photo albums, drawings, and a hand carved business card holder made by Elmer of wood scraps from the AT-10 assembly line.

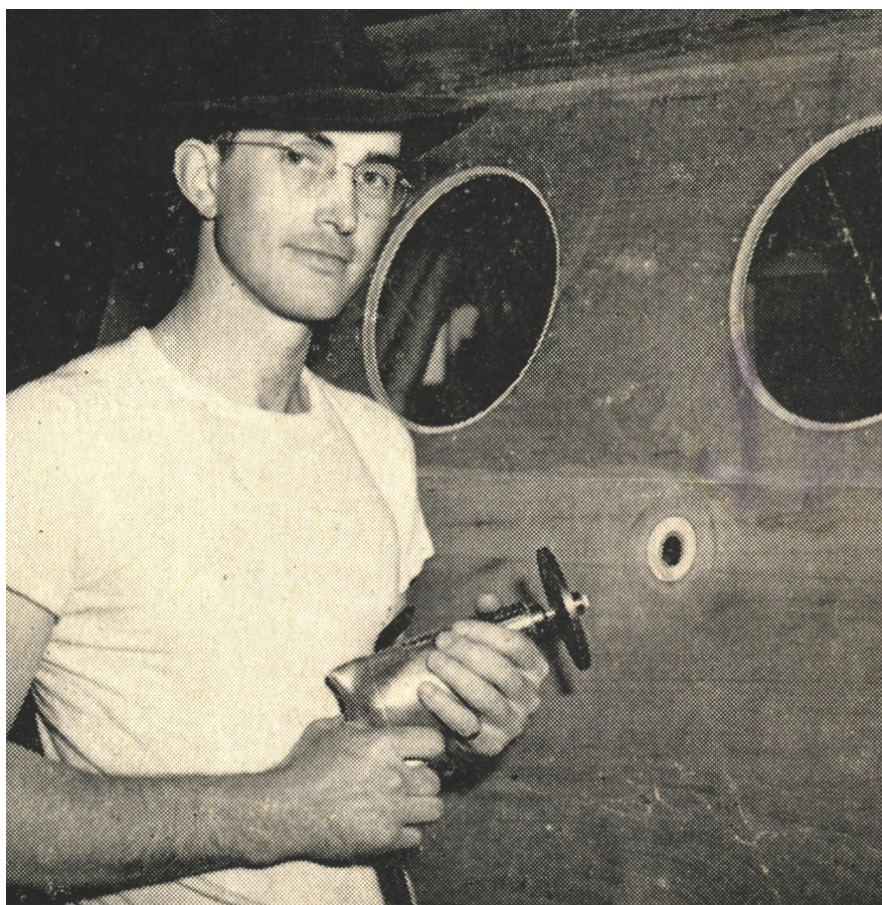
Elmer Graham started at Beech in April of 1942 and worked there until 1948. Lois began a few months later. Because 41-27322 wasn't received by the USAAF until May 19, 1943, it is certain that Elmer worked directly on our restoration airframe.



↓ Elmer Graham, crew chief



A-26 Assembly line - Beech Aircraft Corp., Wichita



(left) A newspaper article prominently featured Elmer and the power sanding disc he created to address a problem on the assembly line.

(below) More detail of the sanding disc is clear in this image.

Photos courtesy of Bill and Mary Graham collection

E. E. Graham and the power sand disc he built for repairing hammer holes in AT-10 skins. The outer face of the disc is covered with sand paper. The hole pictured is one that has been drilled out and partially scarfed by the sand disc





Lois Graham using posting machine - cost accounting



Lois Graham working in the accounting department at Beech. Photo courtesy of Bill and Mary Graham collection



Beech Aircraft - Wichita, KS

Elmer Graham



This appears to be a production meeting at Beech Aircraft Corporation (Elmer, far right in back row). Photos courtesy of Bill and Mary Graham collection



Elmer carved a business card holder from scraps taken from the AT-10 line.



Elmer's craftsmanship is evident in this view of the other side.



The inscription reads:
Carved by Elmer L. Graham from scraps of wood from AT-10s he helped to build Beech Aircraft Wichita, KS 1942.



AirCorps Library archivist Ester works with Bill and Mary Graham to catalog the photos they brought to share.

Company Housing



Elmer and Lois lived in the provided company housing onsite, called Beechwood. Photo courtesy of Bill and Mary Graham collection



Elmer Graham, Beechwood, Wichita, KS



Photo courtesy of Bill and Mary Graham collection

Nov. '44

Lois Graham



Photo courtesy of Bill and Mary Graham collection

Beechwood, Wichita, KS

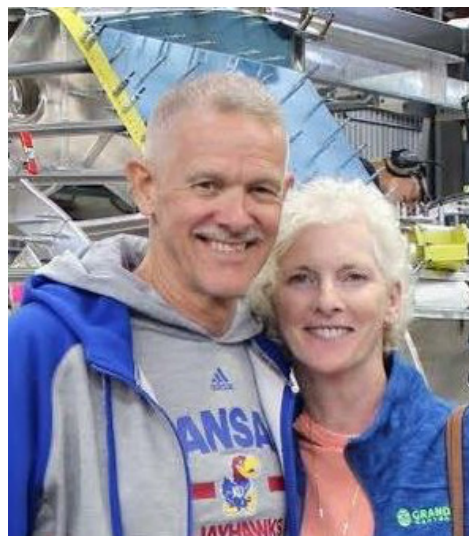


Lois Graham, Beechwood, Wichita KS



Photo courtesy of Bill and Mary Graham collection

Nov. '44



Talk about a family resemblance!



AT-10 painting presented to Bill and Lois Graham by Beech Aircraft Corporation.

BEECHCRAFT Army AT-10

Painted by Eric Sloane, 1942

According to Bill, “when his folks left Beech for other interests, the company gifted them two picture/ paintings matted and framed. One was an AT-10 in flight and the other an AT-7A with floats. Each picture is signed by well known artist Eric Sloane. These hung in my parents home all these years until I inherited them. They were proud of their contributions at Beech Aircraft.”



BEECHCRAFT AT 7A

AT-7A on floats painting by Sloane

BEECHCRAFT Army AT-7 and Navy SNB-2 (Seaplane Conversion Shown)

Painted by Eric Sloane, 1942

Today, artist Eric Sloane’s work is held in the collection of Sloane-Stanley Museum in Kent, CT and the Smithsonian Air and Space Museum in Washington, D.C., which houses one of his major works, the Earth Flight Environment Mural.

Bill and Mary generously left the photos and AT-10 drawings here to be scanned. Ester returned everything to them on Oct 22nd.



Mary, Bill and Guy with the AT-10 Eric Sloane painting.



Guy, who also once worked at Beech, talks to Bill Graham about the AT-10 restoration. The AT-10 cockpit section is the backdrop as Bill and Guy talk AT-10 manufacture.